

# EXYAN

## FALL PROTECTION EXPERT

BY



**PERSONAL  
FALL PROTECTION  
EQUIPMENT**





Key player and expert in securing work at height, particularly in construction and industry for almost 40 years, thanks to its entities **LMP SÉCURITÉ** (installation of safety nets, shrink-wrapping) and **SECURLINE** (standard and custom-made fall protection systems : lifelines, guardrails or access systems : crinoline ladders, bridges and decks, roof-crossing walkways etc.), we are now expanding our activity with the **EXYAN**'s range to offer you the best in individual safety against falls from height.

**EXYAN** offers you :

- A local service : support in choosing the most suitable solution to your needs.
- The possibility of training, audit, risk analysis and inspection.
- Complete solutions adapted to each profession / each intervention.
- A complete catalog and custom-made offer (safety nets, lifelines, access systems, harnesses, lanyards etc.).
- Products developed to guarantee comfort and efficiency at work thanks to collaboration with business experts and perfect knowledge of operators' constraints.





## **EXYAN'S PRESENTATION**

Who are we? .....	<b>1-4</b>
-------------------	------------

## **REGULATION AND PRINCIPLES OF WORKING AT HEIGHT**

Regulations .....	<b>5</b>
Standards .....	<b>6</b>
The categories and components of a PPE system .....	<b>7-8</b>
How to limit the risks .....	<b>9-12</b>

## **OUR FALL PREVENTION SOLUTIONS**

Full body harnesses .....	<b>14-20</b>
Harnesses accessories .....	<b>21-24</b>
Retractable fall arresters .....	<b>25-28</b>
Energy absorber lanyards.....	<b>29-34</b>
Lanyards .....	<b>35</b>
Work positioning lanyard .....	<b>36</b>
Temporary anchors and temporary lifelines .....	<b>40-42</b>
Helmet .....	<b>44</b>
Bags .....	<b>45-46</b>
Connectors .....	<b>47-48</b>

## **AND MUCH MORE**

SecurLine's solutions .....	<b>49-50</b>
Training .....	<b>51</b>



# EXYAN

by



## EXPERT IN FALL PROTECTION FOR ALMOST 40 YEARS

### Experience & Independence

- SecurLine is above all :
- An independent French company, number 1 in its market.
  - Nearly 40 years of experience in fall protection.
  - An innovative and dynamic team made up of a sales and marketing department, business managers, engineers and trainers, all specialized in fall protection.
  - Collective and individual solutions, standard or custom-made : the guarantee of finding a solution perfectly suited to your needs.



## NO COMPROMISE BETWEEN QUALITY AND RESPONSIVENESS

### Know-How & Quality control

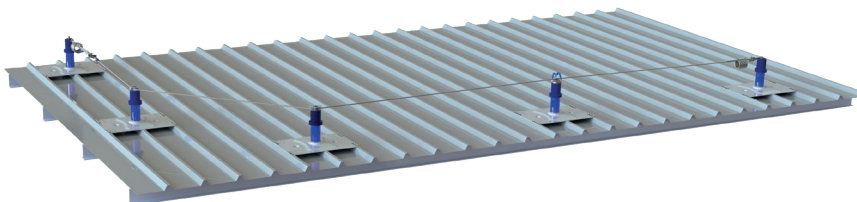
- SecurLine has its own :
- Design and manufacturing tool; assurance of the control and quality of its solutions.
- The direct relationship between the sales department and the workshop allows SecurLine to have very short response and order preparation times, even for custom-made requests.
- Testing laboratory allowing to proceed with checks and tests (static and dynamic) in accordance with current standards.



## A PRIVILEGED INTERLOCUTOR : A PEOPLE STORY

### Support from A to Z

Because safety is above all a People story, SecurLine provides you with a dedicated contact person who will follow your project from A to Z, and will help you choose the best solution, standard or custom-made, to meet your needs.







## CUSTOMIZED SOLUTIONS

### Our engineering service

SecurLine has its own design office to respond to your requests and lead the project, from end to end.

- Analysis of the technical specifications ;
- Pre-study and budget estimate ;
- Designing the solutions in order to be in compliance with the current standards.
- Drawings for manufacturing and final installation.
- Calculation notes for installation reception by the control authority ;
- Manufacturing and installation monitoring until final receipt.



## COLLECTIVE AND INDIVIDUAL SOLUTIONS

### A constantly evolving range

SecurLine also provides you with a wide range of standard products designed to guarantee comfort and efficiency at work :

Access systems :

- ladders,
- decks,
- roof crossing walkways
- etc.

Collective fall arrest systems :

- guardrails
- a full range of safety nets
- etc.

Individual fall arrest systems :

- lifelines,
- brackets and gantries
- etc.

A brand new range of PPE fall arrest systems **EXYAN**, which expands the offer with mobile anchors, fall arresters and a complete range of safety harnesses, from the simplest to the most technical to meet your needs.

**EXYAN**  
FALL PROTECTION EXPERT



## A FULL PACK OF SERVICES

### Experienced trainers / auditors

SecurLine operates in various fields to offer you its services :

- Standard or customized Working at Height trainings (harness use, MEWP safety, suspended person evacuation, PPE inspector, etc.).
  - Safety audit.
  - Prevention day.
  - Verification of your fall protection PPE.
- And more.





## WHAT DOES THE EUROPEAN REGULATION SAY ?

According to Regulation 2016/425 of the European Parliament and of the Council of 9 March 2016, the following definitions apply:

- «Personal protective equipment» (PPE) :
  - a) Equipment designed and manufactured to be worn or held by a person to protect them against one or more risks to their health or safety;
  - b) An interchangeable component for equipment referred to in point (a) which is essential to its protective function;
  - c) A connecting system for equipment referred to in point (a) which is neither worn nor held by a person, designed to connect said equipment to an external device or a safe anchorage point, not intended to be permanently fixed, and does not require fixing before use.
- «Conformity assessment» : The process used to demonstrate whether the essential health and safety requirements of this Regulation regarding PPE have been met.
- «Conformity assessment body» : An organization that performs conformity assessment operations, such as calibration, testing, certification, and inspection.
- «CE marking» : The marking by which the manufacturer indicates that PPE complies with the applicable requirements of Union harmonization legislation providing for its affixing.

They are classified in category III: «risks that may have very serious consequences such as death or irreversible health damage».

### Manufacturer's obligations :

According to this Regulation, the manufacturer of PPE must:

- Ensure that the PPE has been designed and manufactured in accordance with the applicable essential health and safety requirements (set out in Annex II of the Regulation).
- Implement quality control during serial production.
- Affix the CE marking, the identification number of the notified body for production control, and the reference to the applicable standard on the PPE.
- Provide a lot or serial number for the identification of the PPE.
- Make available the instructions and EC declaration of conformity.

The Regulation also specifies that «PPE intended to prevent falls from height or their effects must have a body holding device and a connecting system that can be connected to a safe external anchorage point. They must be designed and manufactured so that, when used under foreseeable conditions of use, the body's fall height is as low as possible to avoid impact against an obstacle, without the braking force reaching the threshold for occurrence of bodily injury, or the opening or breaking of a component of this PPE resulting in the user's fall.».

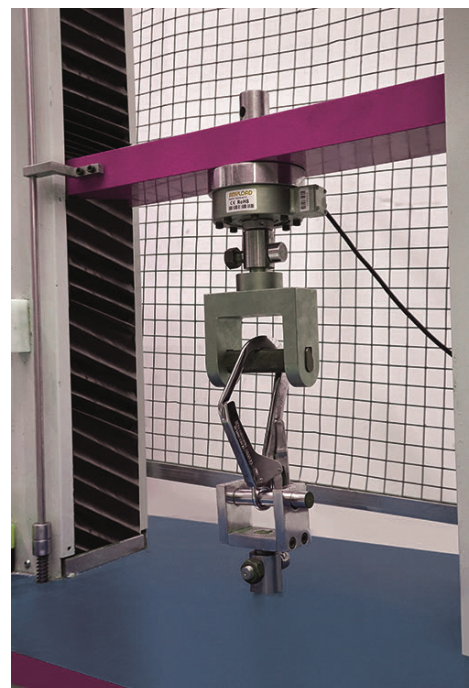


# STANDARDS

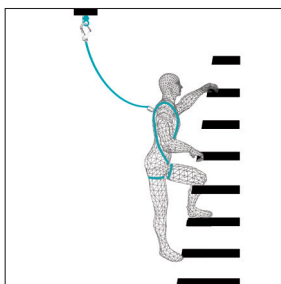
To be considered as PPE, the equipment must be tested and certified as compliant according to the requirements of the European standards.

Below the main European standards :

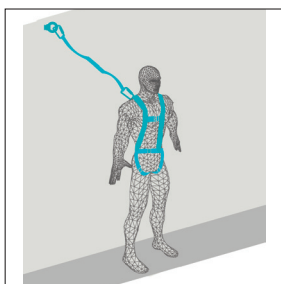
<b>EN 353-1</b>	GUIDED TYPE FALL ARRESTERS INCLUDING A RIGID ANCHOR LINE
<b>EN 353-2</b>	GUIDED TYPE FALL ARRESTERS INCLUDING A FLEXIBLE ANCHOR LINE
<b>EN 354</b>	LANYARDS
<b>EN 355</b>	ENERGY ABSORBERS
<b>EN 358</b>	BELTS AND LANYARDS FOR WORK POSITIONING
<b>EN 360</b>	RETRACTABLE FALL ARRESTERS
<b>EN 361</b>	FULL BODY HARNESES
<b>EN 362</b>	CONNECTORS
<b>EN 813</b>	SIT HARNESES
<b>EN 795-A TO E</b>	ANCHOR DEVICES
<b>TS 16415</b>	PERSONAL FALL PROTECTION EQUIPMENT – ANCHOR DEVICES – RECOMMENDATIONS FOR ANCHOR DEVICES FOR USE BY MORE THAN ONE PERSON SIMULTANEOUSLY





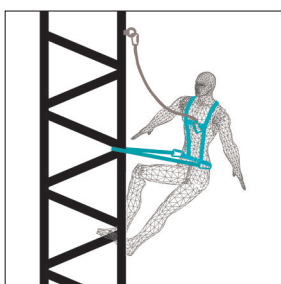
**FALL PROTECTION PPE CATEGORIES****FALL ARREST SYSTEM**

Protects interventions at heights : it will arrest the fall when necessary and prevent the user from hitting the ground, provided the appropriate fall arrest system is selected for the work situation (see fall factor and clearance section). The fall protection system will limit the impact caused by the fall speed to a maximum of 6kN on the human body. It consists of a body restraint system (safety harness), a fall arrest connection (lanyard, retractable, sliding device...), an anchor point (can be fixed or mobile, may be the structure itself), and training for all users and supervisors.

**RESTRAINT SYSTEM**

Prevents falls by limiting movement. Most of the time it consists of a safety harness connected to a lanyard.

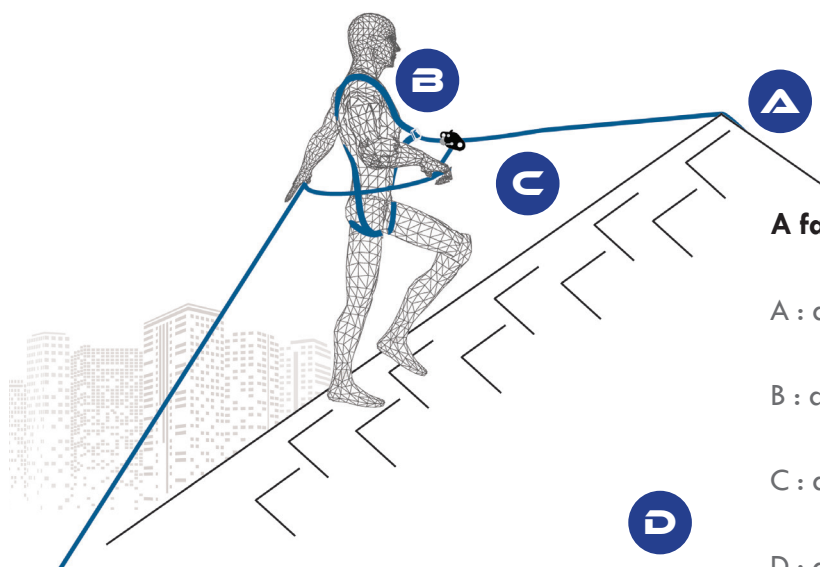
This system is designed to stop a fall from height and should therefore not be confused with a fall arrest system; this even if it is implemented with components that may appear similar. The length of the lanyard must be chosen or adjusted so that the fall is impossible.

**WORK POSITIONING SYSTEM**

This system is not a fall protection system but complements it in certain cases. Most of the time, it consists of a work positioning lanyard connected to the side D-rings of a safety harness equipped with a positioning belt, complemented by a fall arrest system. The work positioning system allows for hands-free work and, in certain situations, reduces the fall clearance.

# FALL PROTECTION

## THE COMPONENTS OF A FALL PROTECTION SYSTEM



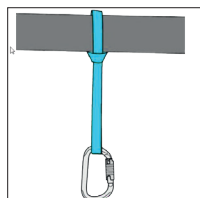
A fall arrest system includes :

A : an anchor system

B : a body holding system

C : a connecting system

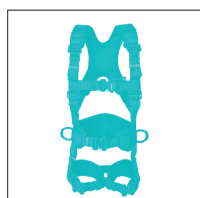
D : a training



### THE ANCHOR SYSTEM



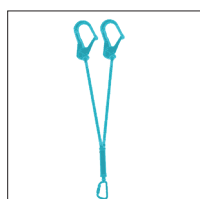
The operator is connected to the anchor point thanks to a connecting system. The anchor system can be removable (sewn sling, removable lifeline...) or fixed (lifeline, anchor device, or structural like post, pylone, scaffold etc.).



### THE BODY HOLDING SYSTEM



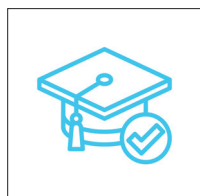
This is a full body harness (shoulder straps and leg straps). It must be equipped at least with a dorsal fall arrest attachment point. It can offer other additional fall arrest sternal attachment points (via 2 textile loops or via a metallic D-ring for example). Any fall arrest attachment point on a harness must bear the mark "A" which indicates that it has been tested and certified as such.



### THE CONNECTING SYSTEM



It connects the operator to the anchor point. It can have several functions : restraint system (most often in the form of a lanyard) or fall arrest system (retractable type fall arrester, fall arrester on rope, lanyard etc.).



### THE TRAINING



Workers at height must be trained by a competent trainer on the usage of the safety products and pre-use check. The training must be linked to the risk analysis, that should be performed to determine the right and safe fall protection solution.



## **LIMIT THE RISKS**

### **SECURE ACCESS TO THE WORKSTATION**

This involves taking measures and implementing devices to ensure the safety of workers when they need to access elevated areas. It involves the use of personal protective equipment (PPE) such as safety harnesses, ladders, secured work platforms, guardrails, and other devices to prevent or mitigate the risks of falls and ensure a safe and protected working environment. It also includes anticipating safety needs through a comprehensive safety audit and implementing the appropriate training(s).

### **SECURE INTERVENTIONS AT THE WORKSTATION**

This implies taking specific measures to ensure the safety of workers when carrying out interventions, repairs or special operations at their workplace.

This includes the use of appropriate personal protective equipment (PPE), such as safety harnesses, helmets, gloves, protective glasses, etc., depending on the specific risks of each intervention.

### **PROVIDE AN EVACUATION SOLUTION**

It requires to anticipate and put in place measures to enable rapid and safe rescue in the event of an emergency or a dangerous situation at the workplace.

This involves identifying evacuation routes, defining emergency exits and ensure that they are clearly marked or having a mobile elevating platform on site to quickly react in case of a fall of a co-worker.

Rescue solutions may also include the installation of alarm devices and emergency communications, such as fire alarms, intercoms, or notification systems to quickly inform workers in case of danger.

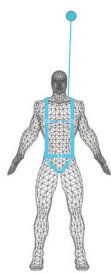


In order to determine the appropriate fall protection equipment, 3 major elements must be considered :

- The **FALL FACTORS**, in other words the position of the anchor point in relation to that of the worker.
- The **MINIMUM CLEARANCE**, that is to say the necessary distance between the anchor point and the ground (or the first obstacle), to avoid hitting the ground in the event of a fall.
- The **PENDULUM EFFECT** (or swing effect), corresponds to the lateral movement that can occur following a fall when the anchor is not located vertically to the operator.

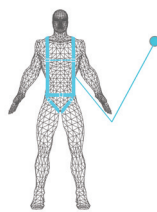
## FALL FACTORS

There are 3 fall factors (therefore 3 different risk levels) :



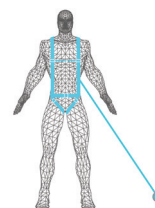
**Fall  
FACTOR 0**

Anchor point located above the head.  
Lanyard above the person.



**Fall  
FACTOR 1**

Anchor point located at the level of the dorsal attachment of the harness or slightly above.



**Fall  
FACTOR 2**

Anchor point located under the dorsal attachment of the harness or near the feet.

**As far as possible, priority should be given to situations with fall factor 0.**

The lower the value of the falling factor, the LOWER the forces will reach the operator's body and the lower the fall clearance must be.

On the contrary, the higher the fall factor, the HIGHER the forces generated by the fall may cause serious injury to the operator and the greater the fall clearance must be to limit risks.

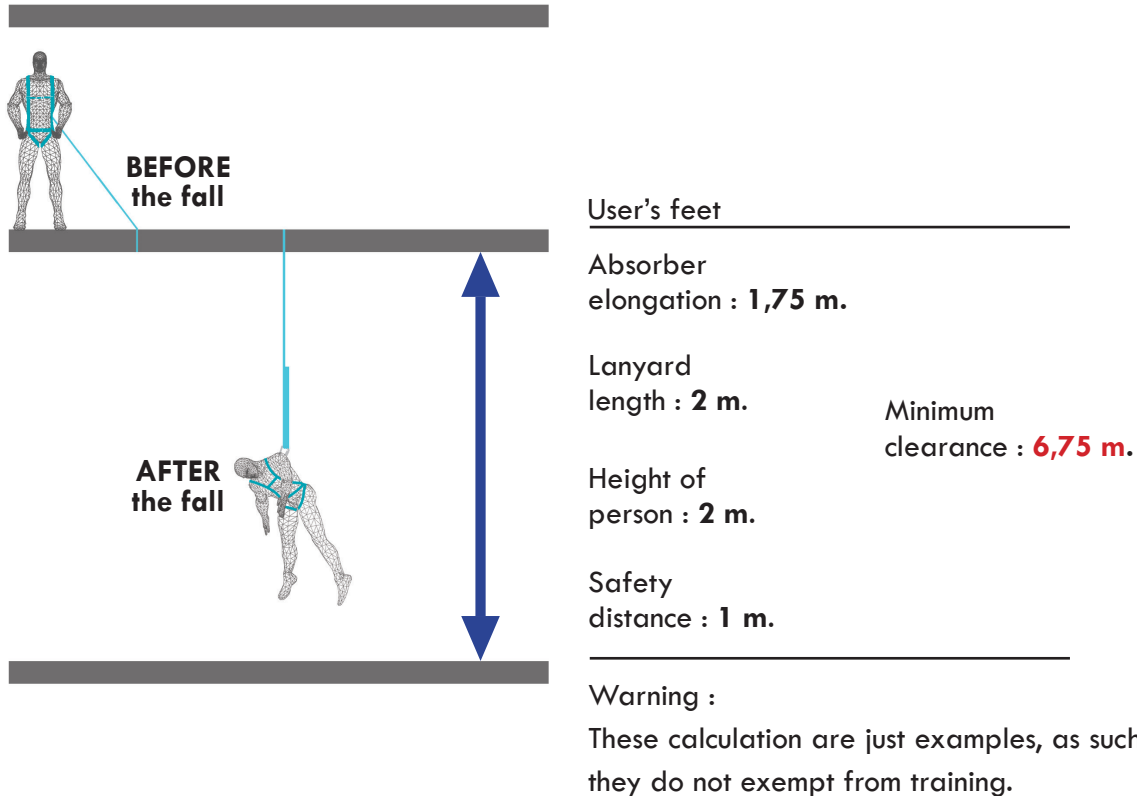


## FALL FACTOR CALCULATION EXAMPLES

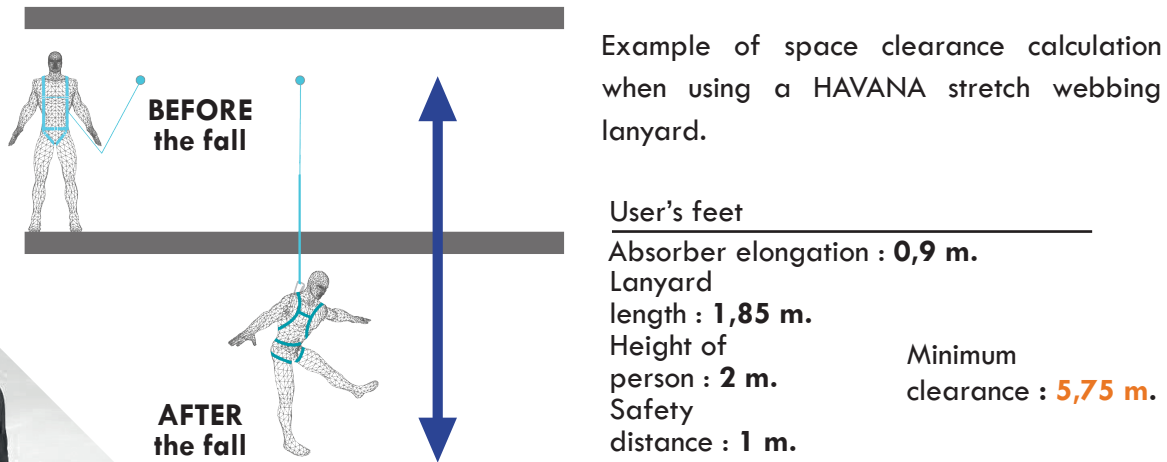
### Example with a 2m absorber with a single lanyard in fall factor 2

This is the situation where the minimum clearance is the most dangerous. It is highly recommended to avoid this situation.

#### FALL FACTOR 2 : **TO AVOID AS FAR AS POSSIBLE**

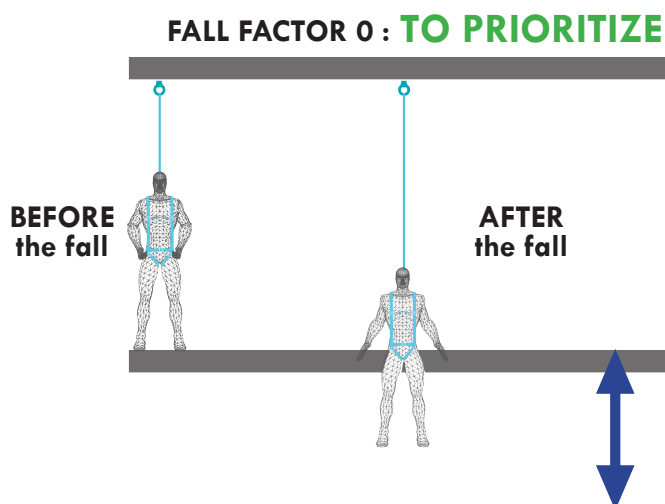


#### FALL FACTOR 1 : **TO BE APPROACHED WITH CAUTION**



## Using a retractable fall arrester device with a fall factor 0

A retractable type fall arrester being a device that locks almost immediately in the event of a fall, its use (for this particular case) is the scenario requiring the smallest minimum clearance. This is the ideal situation.



User's feet

Stopping distance : **80 cm.**

Safety distance : **1 m.**

Minimum clearance : **1,80 m.**

Warning :

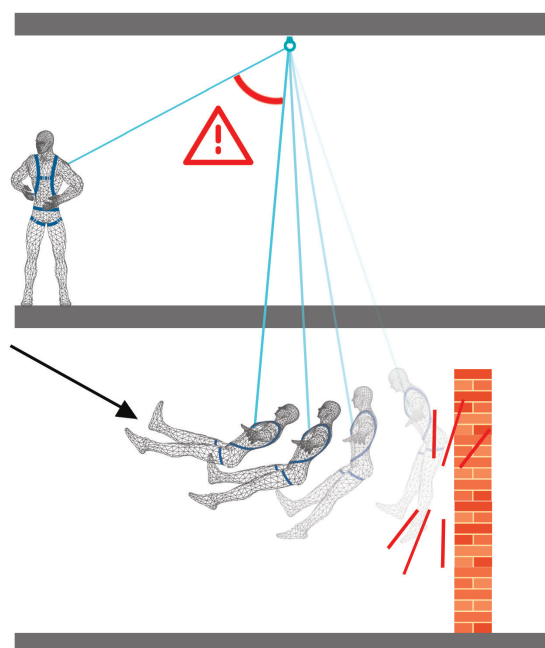
These calculation are just examples, as such, they do not exempt from training.

## PENDULUM EFFECT

The pendulum effect (also called «swing effect») corresponds to the lateral movement that can occur following a fall when the anchor is not located vertically to the operator. This kind of situation can be dangerous because it can cause operator impact on an obstacle located in the path of the fall.



It is necessary to always read the user manual to check the maximum angle authorized by the fall arrest system.



Caution:

These calculations are provided here as examples. The clearance height should be calculated based on the analysis of the environment and the fall protection solution that will be selected. These calculations are explained in theoretical training on fall protection PPE. Contact us for more information.



**OUR FALL PROTECTION SOLUTIONS**

Full body harnesses ..... **14-20**

Harnesses accessories ..... **21-24**

Retractable fall arresters ..... **25-28**

Energy absorber lanyards ..... **29-34**

Lanyards ..... **35**

Work positioning lanyard ..... **36**

Temporary anchors and temporary lifelines ..... **40-42**

The helmet ..... **50**

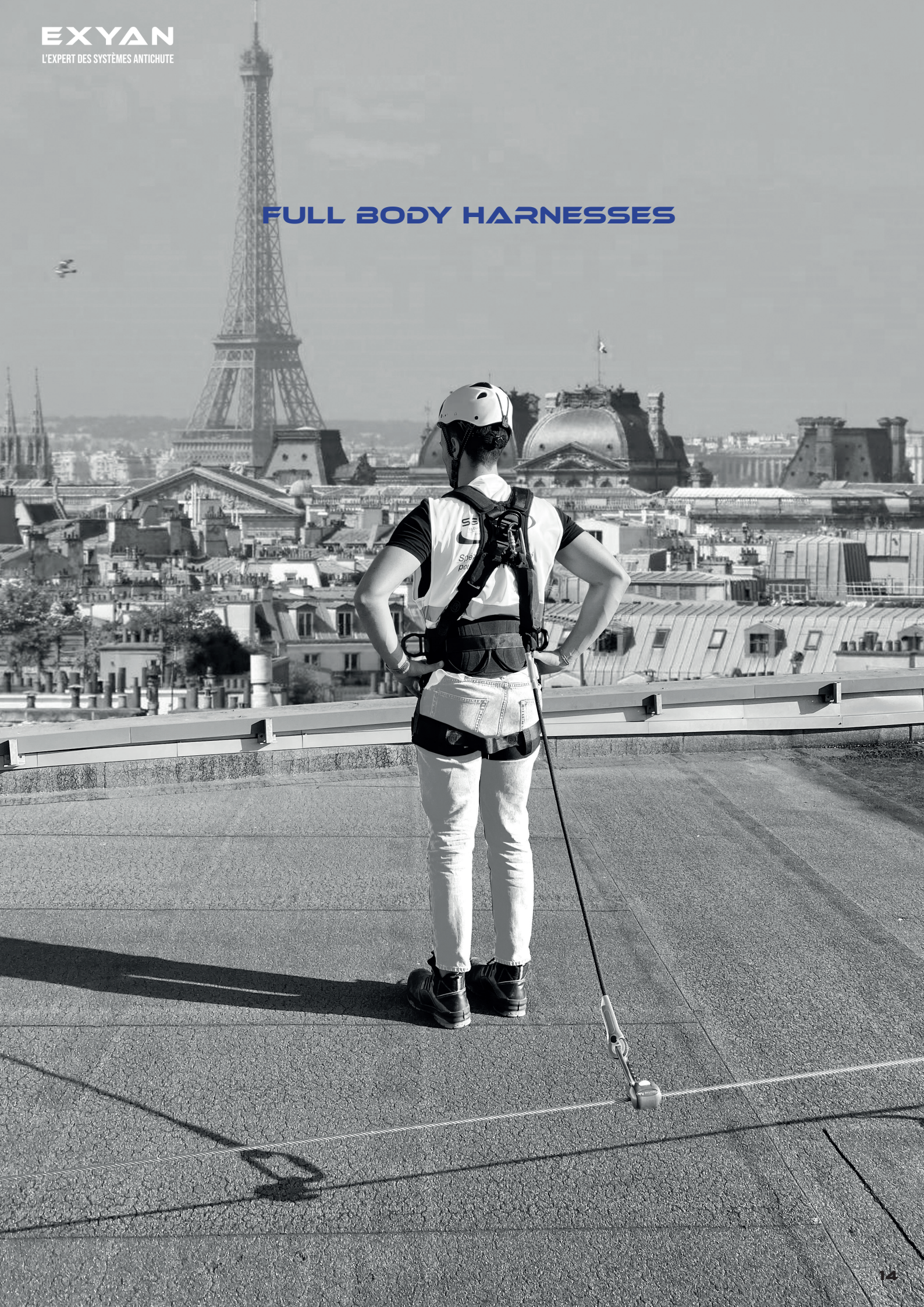
The bags ..... **51-52**

Connectors ..... **53-54**





## FULL BODY HARNESSES





# HARNESS SPECIFICATIONS

## OVERALL STRUCTURE OF A HARNESS



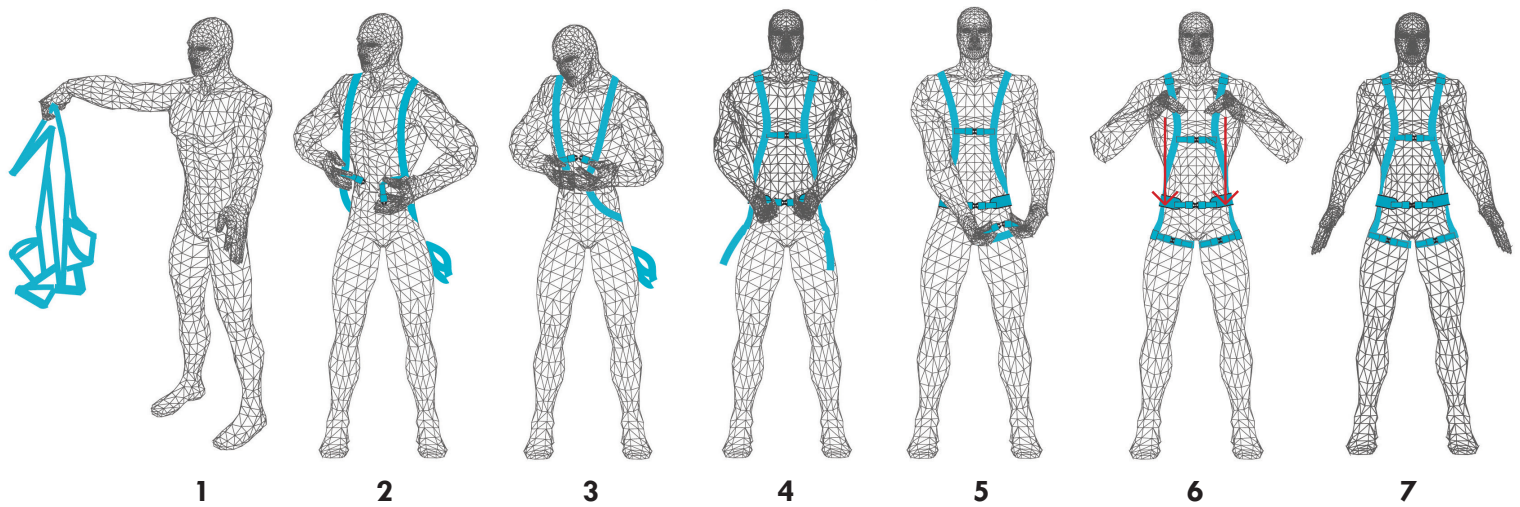
Dorsal D-ring  
(fall arrest attachment point)



- Adjustment buckle.
- Shoulder straps.
- Straps to park extra webbing.
- Dorsal padding.
- Chest straps.
- Sternal D-ring  
(fall arrest attachment point).
- Park point.
- Padded work positioning waist belt.
- Side D-rings for work positioning.
- Padded legs straps.
- Automatic buckles.



## HOW TO PUT ON AND ADJUST A FALL ARREST HARNESS



Follow step 1 to 7 to put the harness on.

Step 1 : Hold the harness by the back D-ring as shown on figure 1, and shake it to allow all straps to fall into place.

Step 2 : Put your arms through the shoulder straps as shown on figure 2, and make sure the webbing doesn't become twisted.

Step 3 : Close the chest strap buckle as shown on figure 3.

Step 4 : Close the belt strap buckle and adjust the belt size to your morphology as shown on figure 4.

Step 5 : Take hold of leg straps between the legs and close using the appropriate buckles as shown on figure 5. Adjust the leg straps so that they fit tight around the legs.

Step 6 : Adjust the shoulder straps as shown on figure 6 so that the harness fits snugly against the body, not too tight.

Step 7 : After all straps have been buckled, tighten all buckles so that the harness fits snug but allow full range of movement.



# FULL BODY HARNESSSES



EN 361



EN 358



## HAWAI

Fall arrest harness 4 points  
2 fall arrest attachments  
2 side attachments for work positioning

Reference EX240-01 (M-L)  
Reference EX240-02 (XL-XXL)

### Super high comfort

- Top-down intuitive shoulder adjustment.
- Quick connect buckles in aluminum.
- Removable dorsal and leg comfort foam : for heat management.

### Great freedom of movements

- Comfortable padded waist-belt.
- V shape on harness side
- Horizontal leg straps (no friction)

### Convenient accessories

- Park point for lanyard hooks when not in use.
- Two tool holder slings on the waist belt.
- Delivered in a reusable small bag.

### Safety

- Quick connect buckles with antireverse system.
- Fall indicators

SIZES	M-L / XL-XXL
STERNAL ATTACHMENT	1 ALUMINUM D-RING
BUCKLES	ALUMINUM QUICK CONNECT
COMFORT FOAM	DORSAL & LEGS (REMOVABLE) / BELT (ATTACHED)



EN 361



## CUBA

### Fall arrest harness, 2 points

Reference EX220-01 (M-L)

Reference EX220-02 (XL-XXL)

#### Super high comfort

- Top-down intuitive adjustment.
- Quick connect buckles in aluminum.
- Removable dorsal and leg comfort foam : for heat management.

#### Great freedom of movements

- V shape on harness side
- Horizontal leg straps (no friction)

#### Safety

- Fall indicators
- Quick-connect buckles with antireverse system.

#### Convenient accessories

- Park point for lanyard hooks when not in use
- Delivered in a reusable small bag

#### SIZES

M-L / XL-XXL

#### STERNAL ATTACHMENT

1 ALUMINUM D-RING

#### BUCKLES

ALUMINUM QUICK CONNECT

#### COMFORT FOAM

DORSAL & LEGS (REMOVABLE)

# FULL BODY HARNESSSES



EN 361

## PALMA

Fall arrest harness, 2 points

Reference EX202-01 (M-L)

### Easy and quick to put on

- Fall arrest front attachment point via 2 webbing loops to link.
- Fall arrest back attachment point via a D-ring.
- Shoulder, leg and chest adjustments
- Quick connect buckles
- Removable dorsal pad

### Safety

- Quick connect buckles with green indicator to ensure proper locking.

SIZE	M-L
STERNAL ATTACHMENT	2 TEXTILE LOOPS
BUCKLES	STEEL QUICK CONNECT
COMFORT FOAM	DORSAL, REMOVABLE



EN 361

## RIO

Fall arrest harness, 2 points

Reference EX200-UNI

Lightweight and quick to put on

- Fall arrest front attachment point via 2 webbing loops to link.
- Fall arrest back attachment point via a D-ring.
- Adjustable chest strap
- Manual pass-through buckles



SIZE

UNIVERSAL

STERNAL ATTACHMENT

2 TEXTILE LOOPS

DORSAL ATTACHMENT

D-RING ON BACK PLATE

BUCKLES

MANUAL

COMING SOON

NEW HARNESS

**ATHENA**

COMFORT & LIGHTWEIGHT

WAIST BELT, MANUAL BUCKLES







## WEBBING EXTENSION

### Fall harness accessories

Ref EX900-01

#### Efficient and easy to use

- Freedom of movements for work at height or in depth
- Quick and easy connection to the fall arrester : equipped with a scratch to keep it accessible on the shoulder strap of the harness.
- Made in Polyester webbing.

#### Versatile

2 possibilities to connect it to the harness :

- With a lark's head (knot) on the back D-ring of the harness (approx. lg 35cm).
- Directly to the back D-ring of the harness via a connector (lg 40cm).

LENGTHS	WITH KNOT : +/-35 CM / CONNECTED : +/- 40 CM
USE	ON THE HARNESS BACK D-RING
STANDARD	EN 354:2010



EX912



EX913



## COMFORT FOAMS

### Comfort pad : shoulders and legs

Ref EX912 (shoulder)

Ref EX913 (legs, by pair)

#### Ergonomic and comfortable

- Ergonomic design to fit the user's body shape.
- Thick padding to reduce pressure and friction points and ensure great comfort.
- Honeycomb material to allow air circulation.

#### Adaptability to different harnesses

- Easily attached to the different EXYAN harness models thanks to its velcro fasteners.
- Delivered as standard : CUBA, HAWAI, and PALMA models (shoulders only).

MATERIAL

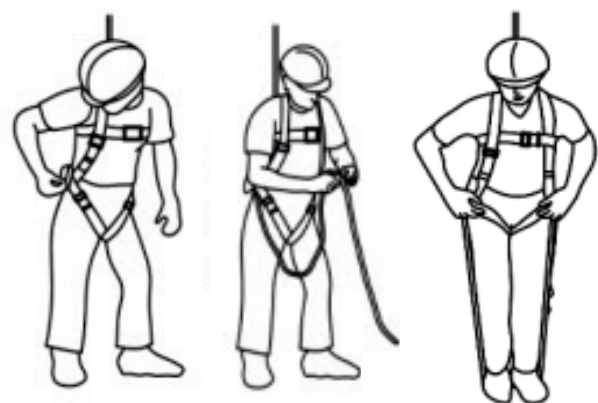
EVA

ATTACHMENT

REMOVABLE (VIA VELCRO)

DELIVERED AS STANDARD

CUBA, HAWAI, PALMA (SHOULDERS ONLY)



## ANTI TRAUMA STRAPS

### Fall harness accessories

Ref EX915 (by pair)

#### Efficient

- Specifically developed to limit the harmful effects of suspension trauma by preventing the compression effect of the harness leg straps in the event of a fall.
- Forms a support for the feet to allow the user to stand upright and relieve pressure on the groin.

#### Quick to install

- Ultra light, they simply attach to the harness via textile loops

#### Practical

- Suitable to all harnesses

SIZE	ADJUSTABLE
MATERIALS	NYLON STRAPS
BUCKLES	ALUMINUM



EX910



EX911

## TOOL LANYARDS

Stretch holding tool lanyard

### Easy and Efficient

- Designed to easily connect a tool and prevent its fall when working at height.
- The stretch webbing allows the comfortable use of the tool.

### 2 models

- Ref EX910 : With 2 small carabiners (lg 62-100cm).
- Ref EX911 : With 1 small carabiner and 1 adjustable loop (lg 78-115cm).

MAX WEIGHT

7 KG

CONNECTOR

ALUMINUM

MATERIALS

NYLON STRAPS

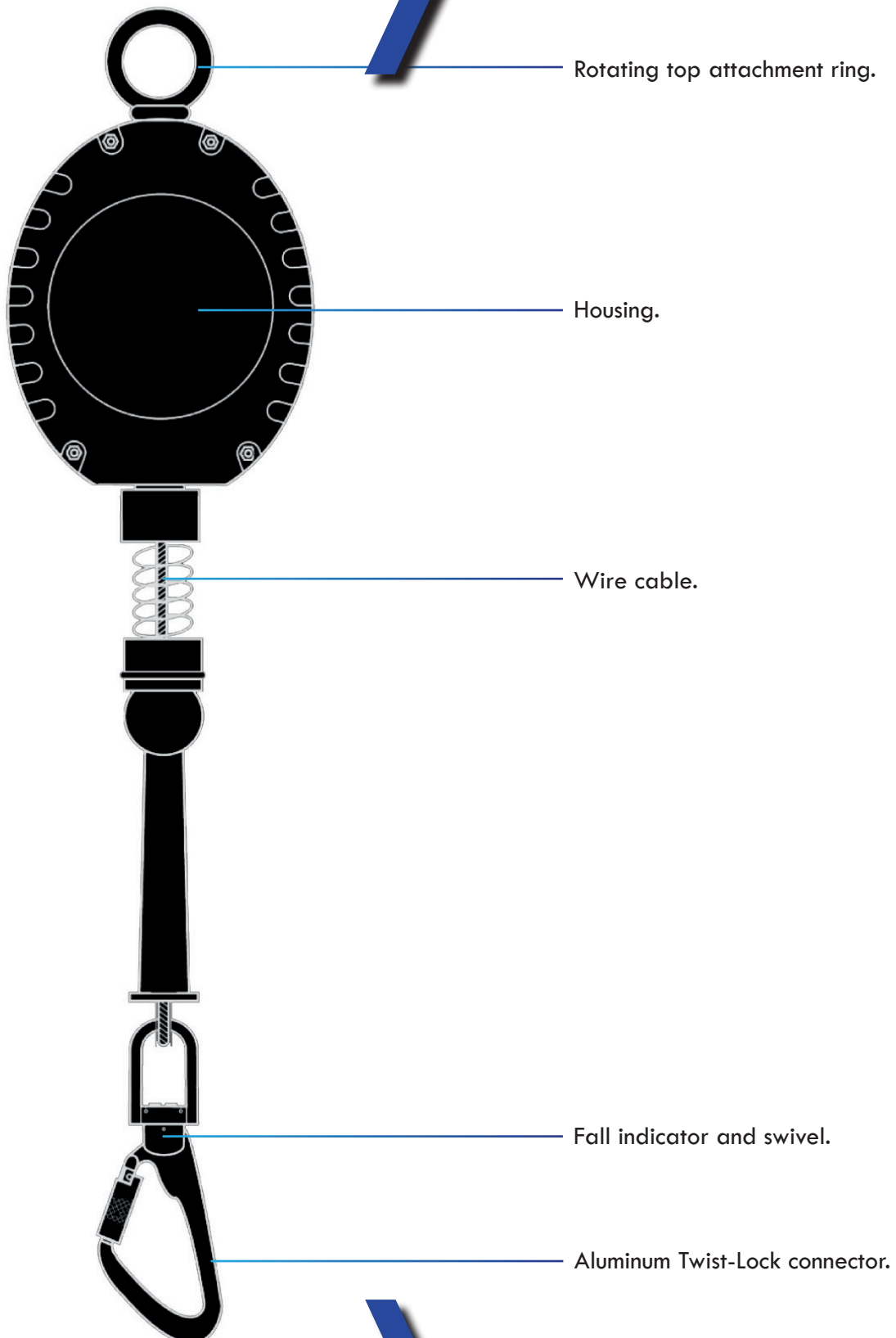


## RETRACTABLE FALL ARRESTERS





## OVERALL STRUCTURE OF AN AUTOMATIC FALL ARRESTER



# RETRACTABLE FALL ARRESTERS



EN 360

COMING SOON

NEW SRL

1.8M WEBBING

LIGHTWEIGHT & SMOOTH



## WOLF 3M

Self-retractable cable fall arrester

Ref EX300-03

### Resistant

- Polymer housing for high resistance to shocks and friction.
- Stainless steel cable Ø4.5mm.
- User weight up to 137kgs in vertical use.

### Handy

- Compact.
- Equipped with two swivels to follow the user's movements in complete freedom and avoid the risk of the cable being twisted.
- 

### Safe

- Stops the fall almost immediately (<50cm).
- Low carabiner equipped with a fall indicator.

LENGTH	3 M
USE	VERTICAL - MINIMUM CLEARANCE 1.5 M
MAX USER WEIGHT	137 KG
STANDARD	EN360 : 2002



EN 360



## WOLF 6M - 10M - 15M - 20M

### Self-retractable cable fall arrester

Ref EX300-06 (6m)

Ref EX300-10 (10m)

Ref EX300-15 (15m)

Ref EX300-20 (20m)

### Resistant

- Polymer housing for high resistance to shocks and friction.
- Stainless steel cable Ø4.5mm.
- User weight up to 137kgs in vertical use.

### Handy

- Handle for quick and easy transport.
- Equipped with two swivels to follow the user's movements in complete freedom and avoid the risk of the cable being twisted.

### Safe

- Stops the fall almost immediately (<50cm).
- Low carabiner equipped with a fall indicator.

LENGTH	6 M / 10 M / 15 M / 20 M
USE	VERTICAL - MINIMUM CLEARANCE 1.5 M
MAX USER WEIGHT	137 KG
STANDARD	EN360 : 2002



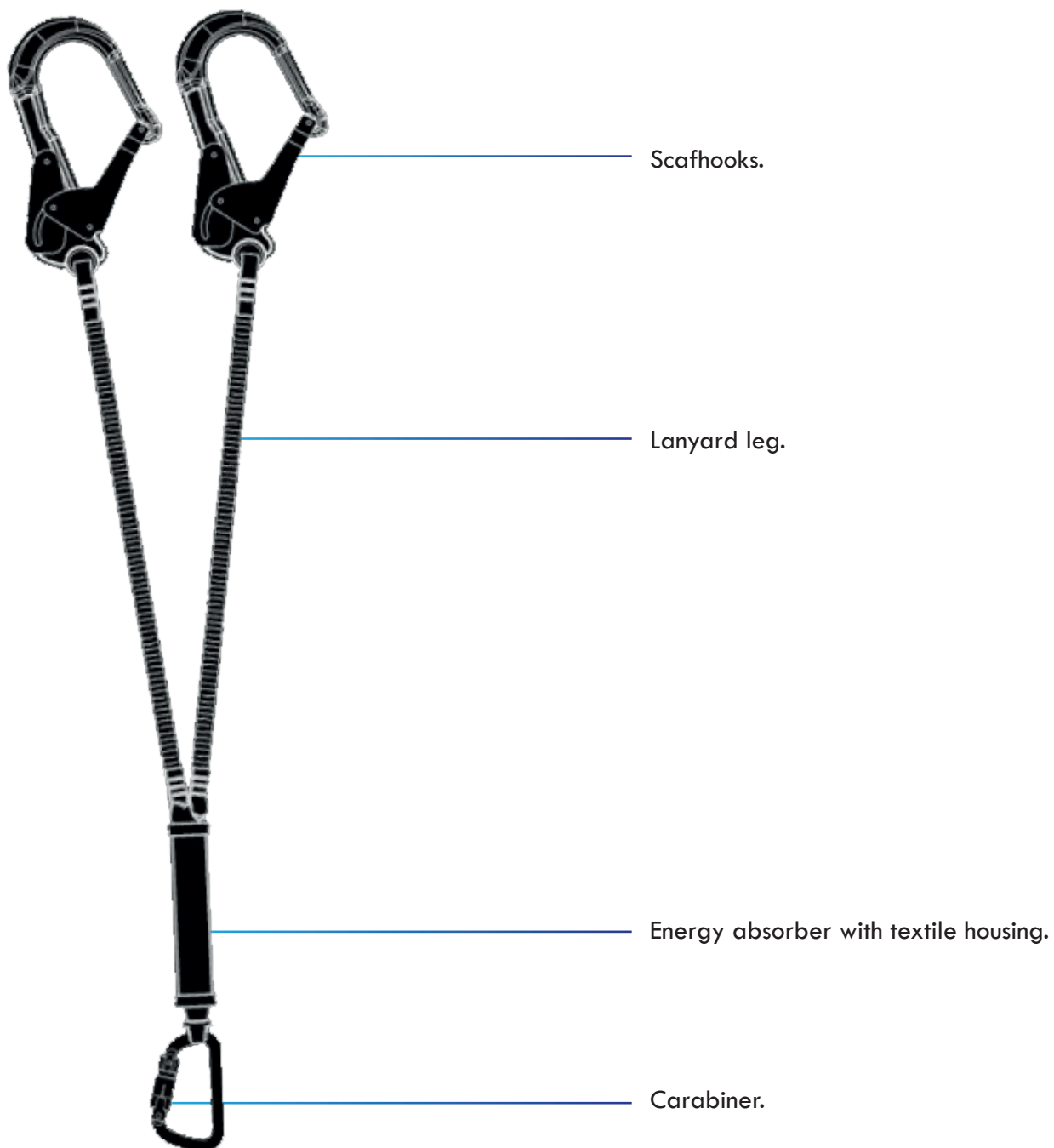


**FALL ARREST LANYARDS  
RESTRAINT LANYARDS  
WORK POSITIONING LANYARD**





## OVERALL STRUCTURE OF A FALL ARREST LANYARD



# ENERGY ABSORBER WITH LANYARD



EN 355

## FIDJI

### Rope fall arrest lanyard with energy absorber

#### Flexible & resistant

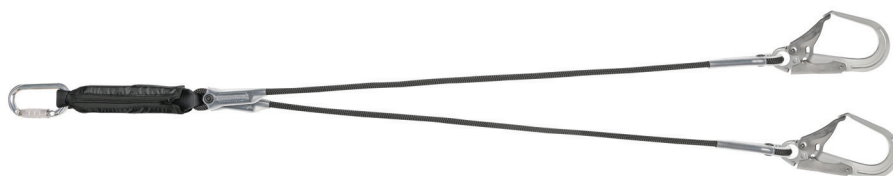
- Made of flexible and resistant kernmantel rope.
- Stops the falls and reduces impact thanks to its webbing energy absorber.
- Absorber protected by a textile cover.
- Safety stitchings protected by a transparent thimble.
- Tested at 140kgs.

Reference	Max length	Connector harness side	Connector anchor side
EX600-150	1,5M	alu twistlock	alu twistlock
EX600-200	2M	alu twistlock	alu twistlock
EX601-150	1,5M	alu twistlock	alu scafhook
EX601-200	2M	alu twistlock	alu scafhook

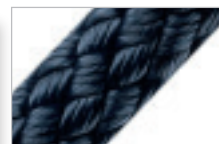
For other versions, please consult us.

LENGTH	1.5 M AND 2 M
MAX USER WEIGHT	140 KG
STANDARD	EN355 : 2002





EN 355



## FIDJI Y

Rope fall arrest twin lanyard with energy absorber

### Flexible & resistant

- Made of flexible and resistant kernmantel rope, it allows movement without disconnection thanks to its double leg.
- Stops the falls and reduces impact thanks to its webbing energy absorber.
- Absorber protected by a textile cover.
- Safety stitchings protected by a transparent thimble.
- Tested at 140kgs.

Reference	Max length	Connector harness side	Connector anchor side
EX620-150	1,5M	alu twistlock	alu scafhook
EX620-200	2M	alu twistlock	alu scafhook
EX621-150	1,5M	steel twistlock	steel scafhook
EX621-200	2M	steel twistlock	steel scafhook

For other versions, please consult us.

LENGTH

1.5 M AND 2 M

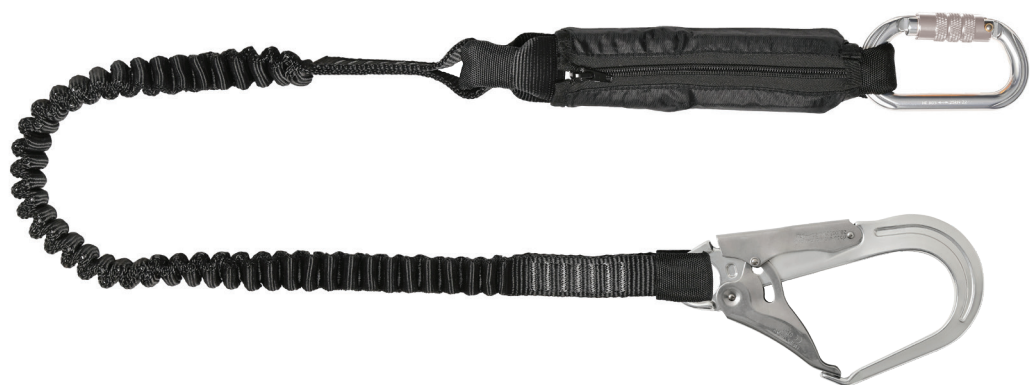
MAX USER WEIGHT

140 KG

STANDARD

EN355 : 2002

# ENERGY ABSORBER WITH WEBBING



EN 355



## HAVANA

Fall arrest lanyard with energy absorber

### Flexible and comfortable to use

- Light and easy to handle stretch fall arrest lanyard.
- Minimizes the risk of tripping thanks to its stretch webbing.

### Resistant

- Stops the fall and reduces the impact thanks to its energy absorber.
- Absorber protected by a textile cover.

Reference	Max length	Connector harness side	Connector anchor side
EX630-185	1,85M	alu twistlock	alu twistlock
EX631-185	1,85M	alu twistlock	alu scafhook

For other versions, please consult us.

MAX LENGTH

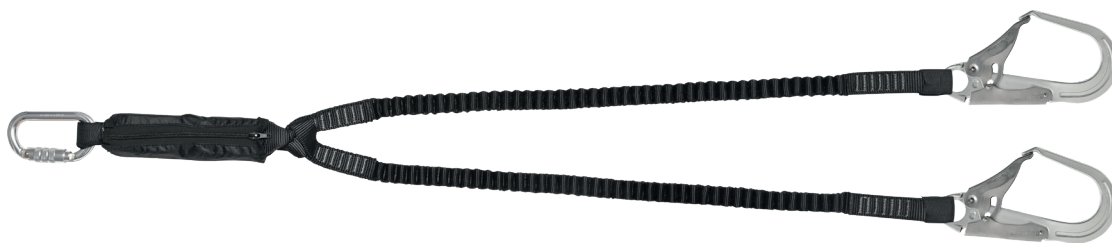
1.85 M

MAX USER WEIGHT

140 KG

STANDARD

EN355 : 2002



EN 355



## HAVANA Y

Twin fall arrest lanyard with energy absorber

### Flexible and comfortable to use

- Twin stretch fall arrest lanyard, light and easy to handle, it allows movement without disconnection thanks to its double leg.
- Reduces the risk of tripping thanks to its elastic webbing composition.

### Resistant

- Stops the fall and reduces the impact thanks to its energy absorber.
- Absorber protected by a textile cover.

Reference	Max length	Connector harness side	Connector anchor side
EX640-185	1,85M	alu twistlock	alu scafhook

*For other versions, please consult us.*

MAX LENGTH

1.85 M

MAX USER WEIGHT

140 KG

STANDARD

EN355 : 2002





EN 354

RHODES

Restraint lanyard in kernmantle rope

Ref EX650-100.

Ref EX650-150.

Ref EX651-150

Flexible and resistant

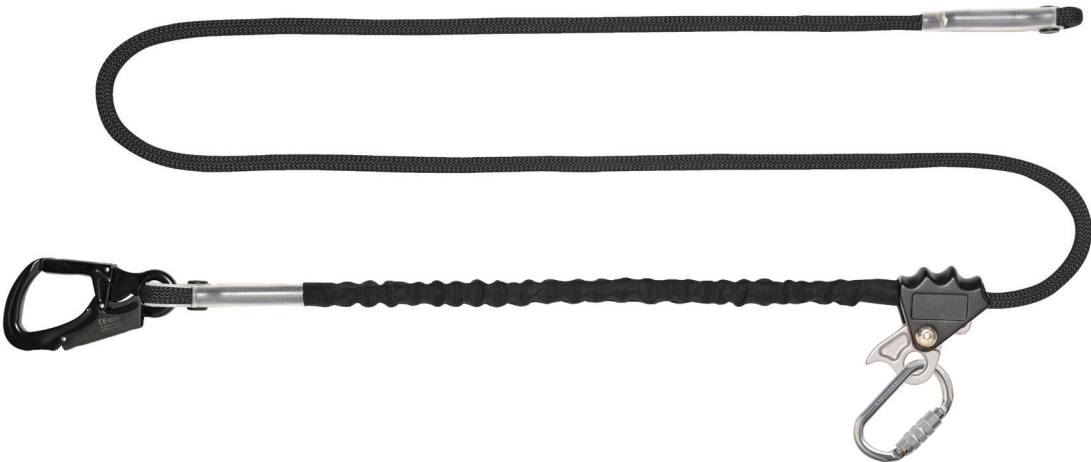
- This lanyard is not a fall arrester but a movement limiter.
- Prevents a fall: positioned at a sufficient distance from the edge, it will hold the user and prevent any tipping.
- Safety stitchings protected by a transparent thimble.

Reference	Max length	Connector harness side	Connector anchor side
EX650-100	1M	steel twistlock	steel twistlock
EX650-150	1,5M	steel twistlock	steel twistlock
EX651-150	1,5M	steel twistlock	steel scafhook

For other versions, please consult us.

LENGTH	1 M AND 1,5 M
MATERIAL	ROPE DIAM. 12MM
STANDARD	EN354 : 2010

# WORK POSITIONING LANYARD



EN 358



## TENERIFE

### Work positioning lanyard

Ref EX660-200

#### High strength

- Designed to be used with a waist belt harness as a work positioning system and allow the user to work handsfree.
- Made in kernmantel rope diameter 12mm, protected by a webbing sheath.
- Safety stitchings protected by a transparent thimble.

#### Easy use

- Smooth adjustment with the aluminum rope adjuster along the rope with one hand.
- Equipped with a twist-lock carabiner and a snaphook for an easy and quick connection to the side D-rings.
- Safety : allow in some cases to limit the space clearance.

LENGTH	2 M
MATERIAL	ROPE DIAM. 12MM
STANDARD	EN358 : 2010



**EXYAN**

L'EXPERT DES SYSTÈMES ANTICHUTE

LA 4x40

empêche pas la  
n du virus

JE  
DIRE

## TEMPORARY VERTICAL LIFELINE



# MOBILE FALL ARRESTER



**EN 353-2**

## CANCUN

**Temporary vertical rope lifeline  
with mobile fall arrester**

Ref EX700-10 (lg 10m)

Ref EX700-20 (lg 20m)

Ref EX700-30 (lg 30m)

### Flexible and easy to install

- Follow the user movement and stop the fall immediately.
- Equipped with a twistlock steel carabiner.

### Resistant

- Steel rope grab and kernmantel rope.

### Safety

- Unremovable from rope
- Tested to maxuserweight 140kgs (equipment included)

#### LENGTHS

10M / 20M / 30M

#### MAX USER WEIGHT

140 KG

#### STANDARDS

EN353-2 : 2002

## TEMPORARY ANCHORAGES

## TEMPORARY LIFELINES





EN 795-B

## OSLO

Sewn sling

### Versatile

- Designed to create a temporary anchor point on a fixed structure.
- Made in 25mm wide polyamide webbing, resistant to abrasion.

### Available in 4 lengths :

- 60cm ref EX820-60
- 80cm ref EX820-80
- 120 ref EX820-120
- 150cm ref EX820-150

LENGTH	60 CM / 80 CM / 120 CM / 150 CM
USE	ANCHOR POINT
STANDARD	EN795 2012 TYPE B



# TEMPORARY ANCHOR SLING



EN 795B

## ORLANDO

### Adjustable anchor sling

Ref EX810-05 version 5m

Ref EX810-10 version 10m

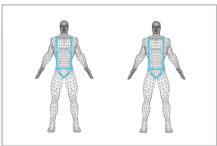
#### Simple and efficient

- Quick to install, this adjustable strap allows for the creation of a temporary anchor point for one person by simply and swiftly encircling a structure.

#### Adjustable

- Quick adjustment to the size of the structure thanks to its ratchet adjustment system.
- Equipped with a quarter-turn carabiner.
- Available in 2 lengths : 5m and 10m.

LENGTH	5 M & 10 M
USE	HORIZONTAL
MAX USER	1 USER
STANDARDS	EN795B : 2012 TYPE B



EN 795B

## MAJORQUE

### Horizontal Webbing Anchorage Line

Ref EX800-20

#### Adaptability.

- Adjustable strap allowing the creation of a temporary horizontal lifeline between two structures.
- Users (up to 2 persons simultaneously) can connect a fall arrest lanyard via a connector and work safely while moving along the line.

#### Modularity.

- Quick adjustment thanks to its ratchet adjustment system.
- Easy storage with its bag.
- Total length: 20m.

LENGTH	FROM 3 M TO 20 M
USE	HORIZONTAL
MAX USER	2 USERS
STANDARDS	EN795 : 2012 TYPE B



## ACCESSORIES & CONNECTORS





# HELMET



EN 12492

## BARBADE

### Safety helmet

Ref EX920

#### Light and comfortable.

- Designed to provide maximum protection against drops and impacts.

#### Perfect fit.

- Its adjustable chin strap allows for a perfect fit which ensures the helmet has impeccable support and comfort.

#### Breathable.

- Its 6 ventilation holes create a controlled air flow providing breathability and keeping you dry.

#### Allows adding accessories

- Lamps,
- Visors,
- Noise-canceling shell,
- Etc.

SIZE

FROM 54 CM TO 60 CM

WEIGHT

435 GR

STANDARDS

EN 12492



BACK PACK

Designed for great comfort when transporting PPE

Ref EX930

Light and comfortable

- Material PE 600 D.
- Shoulder straps and back padded with comfortable foam.

Practical

- 2 lateral pockets.
- 1 inside pocket.
- Capacity 15 liters.
- Size 250x420x180mm.

CAPACITY	15 LITERS
SIZE	250 X 420 X 180MM
MATERIAL	PE 600 D



## TRANSPORT BAG

Large bag to transport PPE

Ref EX931

### Comfortable

- Material PE 600 D.
- Reinforced handle for comfortable handling.

### Practical

- Top and front zipper.
- Adjustable and removable shoulder strap.
- Size 550x325x280mm.

SIZE

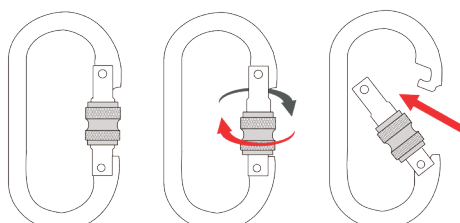
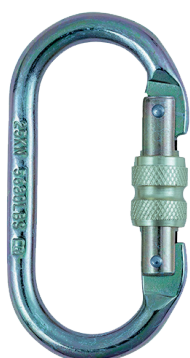
550 X 325 X 280MM

MATERIAL

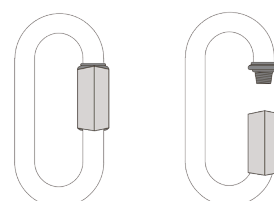
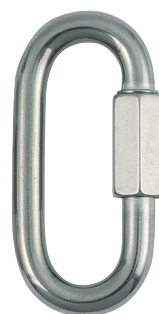
PE 600 D



## SCREW LOCK SYSTEM



Turn to unscrew and push the gate



Turn to screw/unscrew

### Screwlock steel carabiner

Ref HT-R02

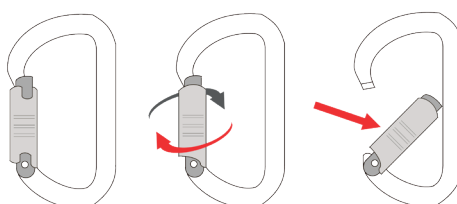
- Opening 17mm
- Certified EN362 classe B

### Screwlock steel quick link

Ref HT-R01-10

- Opening 15mm
- Certified EN362 classe Q

## TWIST-LOCK OPENING SYSTEM



Turn and push



### Twistlock alu carabiner

Ref HT-R05

- Opening 19mm
- Certified EN362 classe B

### Twistlock steel carabiner

Ref HT-R03

- Opening 20mm
- Certified EN362 classe B

## SCAFHOOKS



### Scaffhook in steel

Ref HT-H03

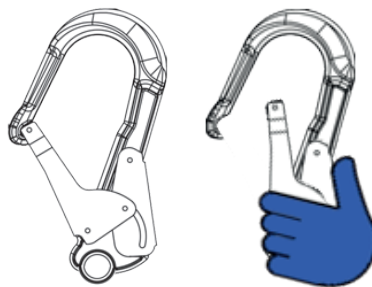
- Opening 55mm
- Certified EN362 classe A



### Scaffhook in aluminum

Ref HT-X05

- Opening 56mm
- Certified EN362 classe A



**Double action for opening:  
squeeze the back and the front**

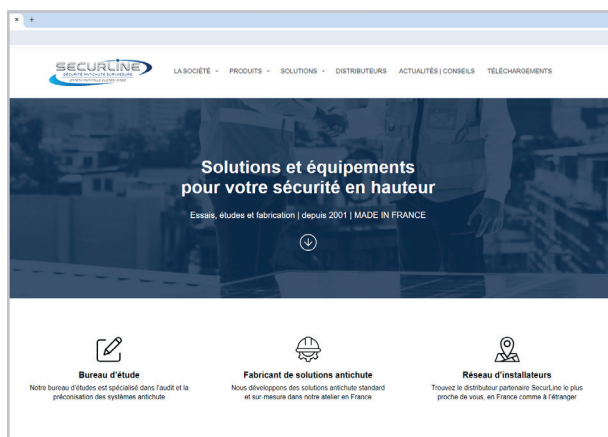
## DISCOVER THE SECURLINE RANGE



### CATALOG

#### The reference for fall protection

Discover the fall protection solutions developed by SecurLine in its catalog and explore a diversified range of products designed to meet all safety needs. Innovative and reliable solutions are available to effectively secure work at height.



### INTERNET WEBSITE

#### [www.securline.fr](http://www.securline.fr)

SecurLine provides a comprehensive range of supports to assist with the implementation of all fall protection projects. You can find - among other things - technical data sheets, installation instructions, and certificates of conformity for each solution.



### ENGINEERING DEPARTMENT

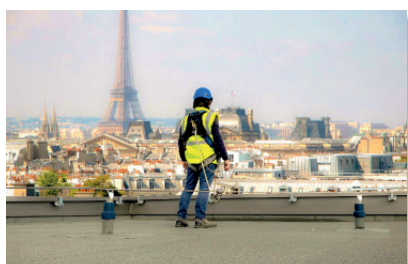
#### Dedicated contacts

The engineering department specializes in studying fall protection systems and creating comprehensive solutions to address all issues related to work at height. Naturally proficient in structural design and calculations, our business engineers have a thorough understanding of work at height European regulations, as well as possible technical solutions.

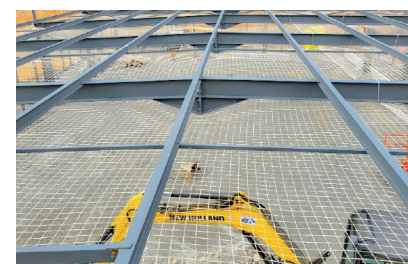
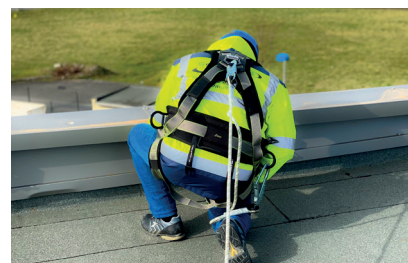
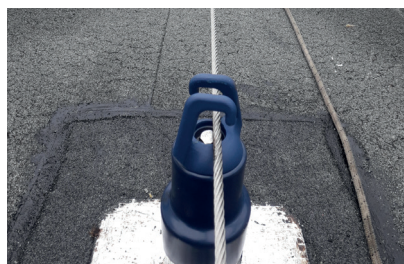
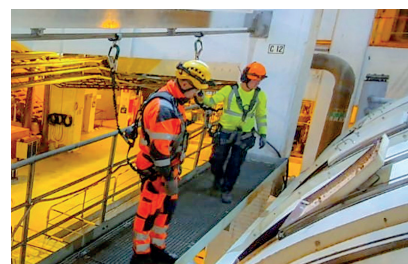
**SecurLine offers both standard and custom-made solutions, taking into account various parameters related to your work at height situation : regulations, environment, technical constraints (types of supports, space limitations, etc.), ensuring a safe intervention.**

For more information about the products and services offered by SecurLine, please do not hesitate to contact us.





## ABSOLUTE FALL PROTECTION



Cable lifelines  
Rail lifelines  
Vertical lifelines  
Anchor systems  
Fixed gantries and brackets  
Mobile gantries and brackets  
Weighted interfaces  
Simple and caged ladders  
Roof crossing walkways

Self-supporting gantries  
Bridges and decks  
Guardrails  
Brackets and masts  
Securing the translucent materials  
Roof walkways  
Ground solutions  
Fibrociment roof interfaces  
Securing green roofs  
Protecting the tanks and pits

Automatic fall arresters  
Harnesses  
Lanyards  
Temporary lifelines  
Anchor slings  
Connectors  
Helmets  
Bags  
and much more



This action falls into the category of skill adaptation and development actions for employees and complies with a regulatory obligation for employees (Article 4323 of the Labor Code). We recommend a refresher training (M.A.C) every three years.

SecurLine offers comprehensive training programs that meet regulatory requirements related to falls from heights. These cover a wide range of topics, from regulations to the use of harnesses and fall protection devices, to advanced skills for specific environments such as telecom towers, wooden/concrete poles, lifelines, and more.

Our training programs are primarily hands-on! Leveraging the expertise of an experienced rope access trainer in the field of work at heights, we provide both standard and customized training to meet regulatory requirements, enhance skills, and ensure the safety of all participants in various work-at-height situations.

Non-exhaustively, here is a list of examples of training sessions where we can assist you :

- Working at height on a flat roof.
- Securing in a MEWP (mobile elevated work platform).
- Working at height on a sloped roof.
- Working at height on a unloading dock.
- Confined space and evacuation.
- Working at height on an electrical pylon.
- Working at height on a rope (attention to specific conditions)
- Working at height trainer training
- Evacuation of a suspended person
- Training for fall protection equipment (EPI) inspector
- Working on a pole
- Etc.

## REGULATORY TRAINING

Training modules meeting regulatory requirements.  
Standard and tailor-made training



## CHECKING PPE

It is mandatory and must be conducted every 12 months. We carry it out for you and provide concise and justified recommendations.



# NOTES







**EXYAN**  
FALL PROTECTION EXPERT

BY **SECURLINE**  
SÉCURITÉ ANTICHUTE SUR-MESURE  
CUSTOM-MADE FALL PROTECTION SOLUTIONS

36 Avenue de Plaisance  
ZAE de Plaisance 16300 Barbezieux St Hilaire - France

Téléphone : +33(0) 545.788.385  
Email : [contact@exyan.fr](mailto:contact@exyan.fr)

[www.exyan.fr](http://www.exyan.fr)

